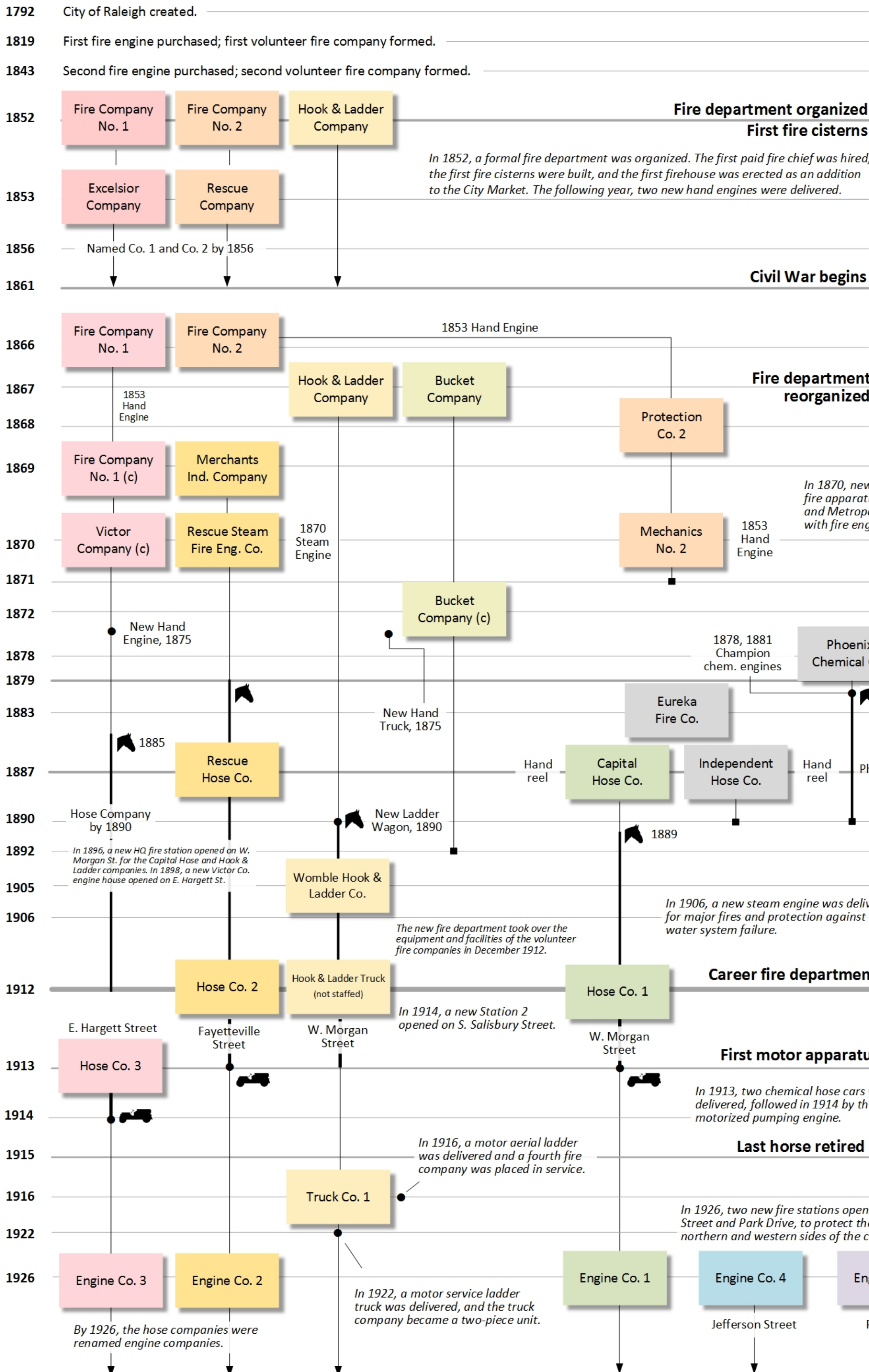


Raleigh Fire Department History – 1792 to 1926



Hand engine – Hand-pulled & powered pumping engine, first delivered in 1819.

Steam engine – Steam-powered pumping engine, first delivered in 1870.

Hook and ladder truck – Wagon with ladders, fire hooks, and other tools.

Bucket truck – Wagon with buckets, ladders, and other tools.

Chemical engine – Wagon with water tanks, that can be pressurized and discharged, using chemical reactions.

Hose company – Reel or wagon with hose, that's connected to fire hydrants, for hose streams powered by engines or hydrant pressure.

Notes: The notation (c) indicates a colored fire company. The first fire engine was suggested in 1802. Funds were solicited, but the apparatus was apparently never ordered. The fire companies in 1853 took their names from the two newly delivered engines. Fire company organization during the Civil War is not known. Before the Rescue Company received a dedicated horse team in 1879, they used private horses or the city horses for parades and at some fires. The steamer was hand-pulled for most of the time. In 1888, the first fire alarm boxes were installed. They triggered the city bell housed at Metropolitan Hall.