

Ten-Ten/Garner Suburban Fire Insurance Realignment and Station Closure

Presentation to Fire Commission
July 19, 2018



Insurance District Realignment and Station Closure

Background Information

Initial Request to explore county participation in station location

District Changes and Budget Implications

Insurance District Changes

Budget Implication

Background Information

Initial Request to Explore District Realignment

Proposal for co-location of Garner FD & Wake EMS with cost share of rural area.

Met with Town of Garner – March 2017

Discussed with Fairview Fire Chief – March 2017

Discussed with Fairview Board Member - April 2017

Continued meetings and discussions

Potential station design to allow for future expansion and co-location

Background Information

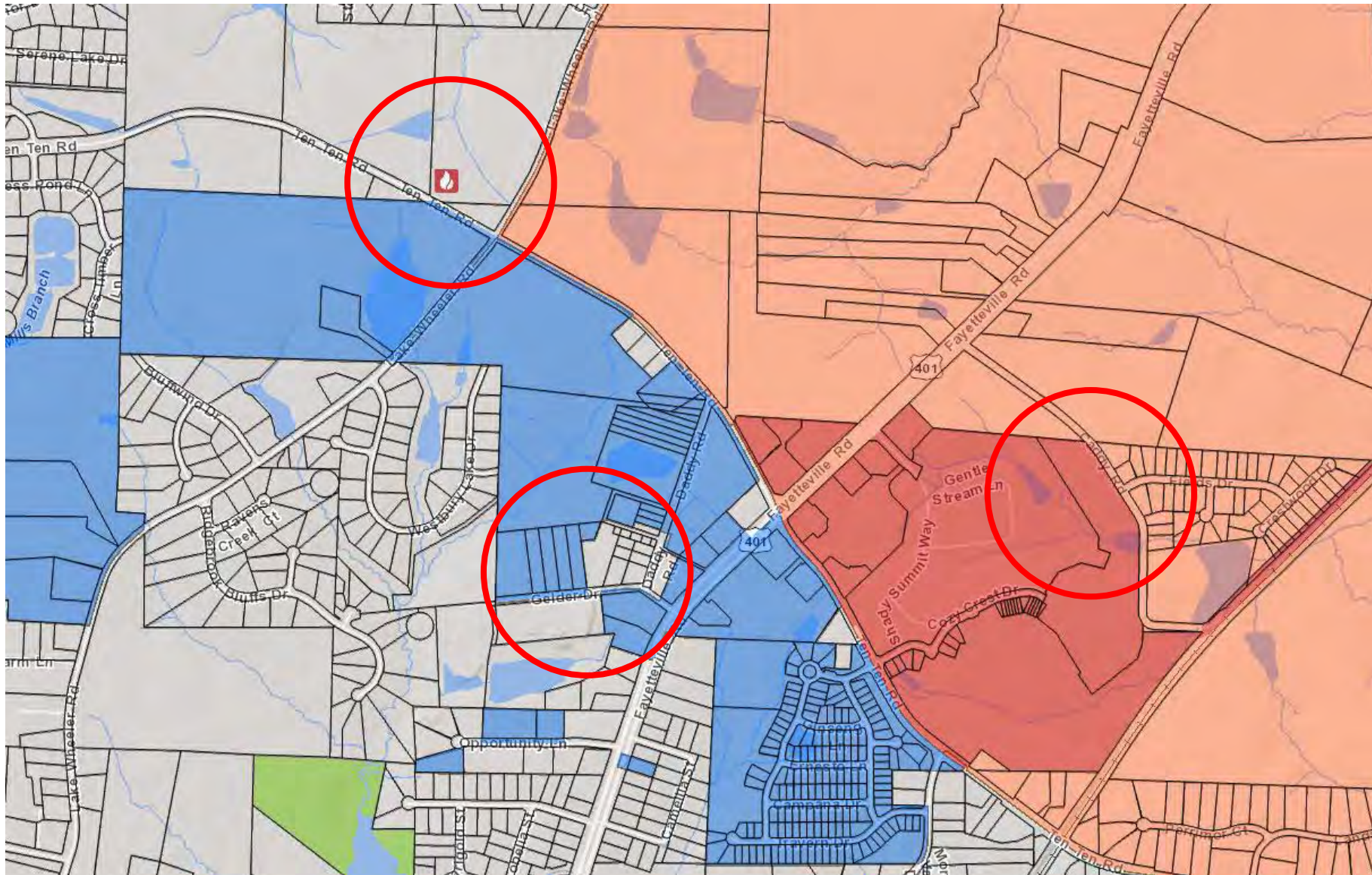
Why Consider Change?

Continued Town Annexations and shrinking Fire Tax revenue

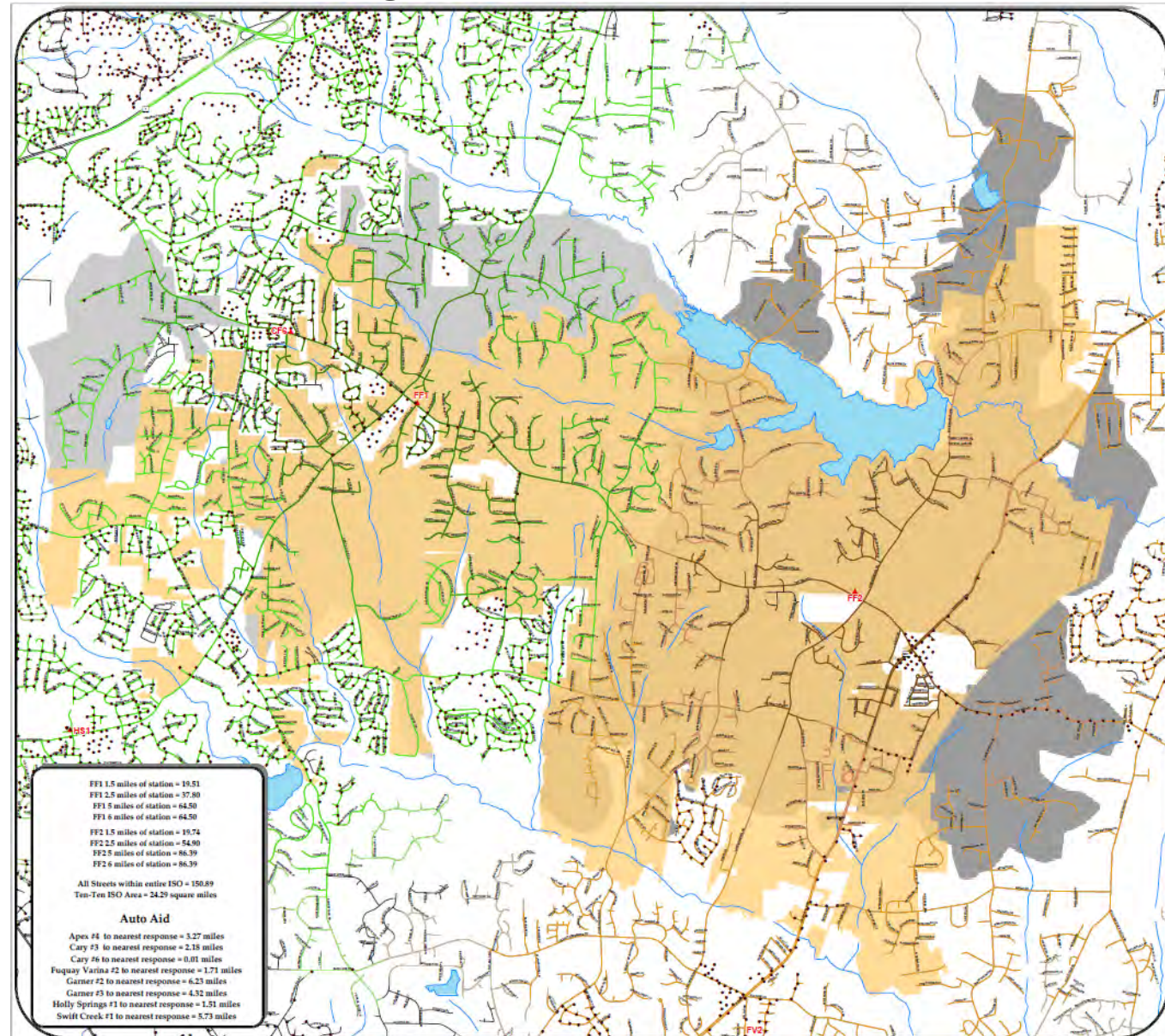
New cost-share formula premised on continued reduction in county share

Opportunity to Leverage Municipal Fire Service to Lower County Costs

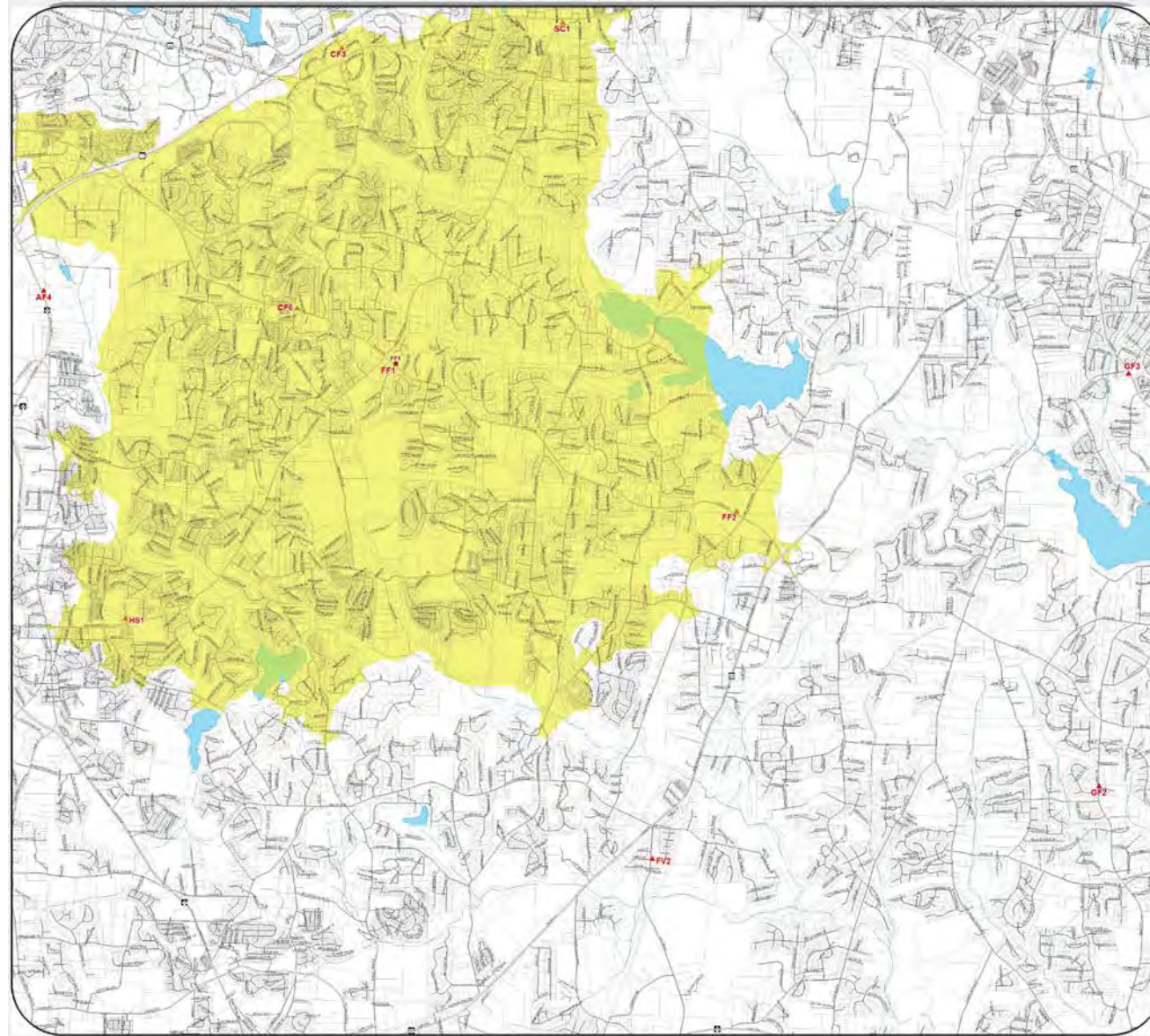
Reduce future station “saturation potential”



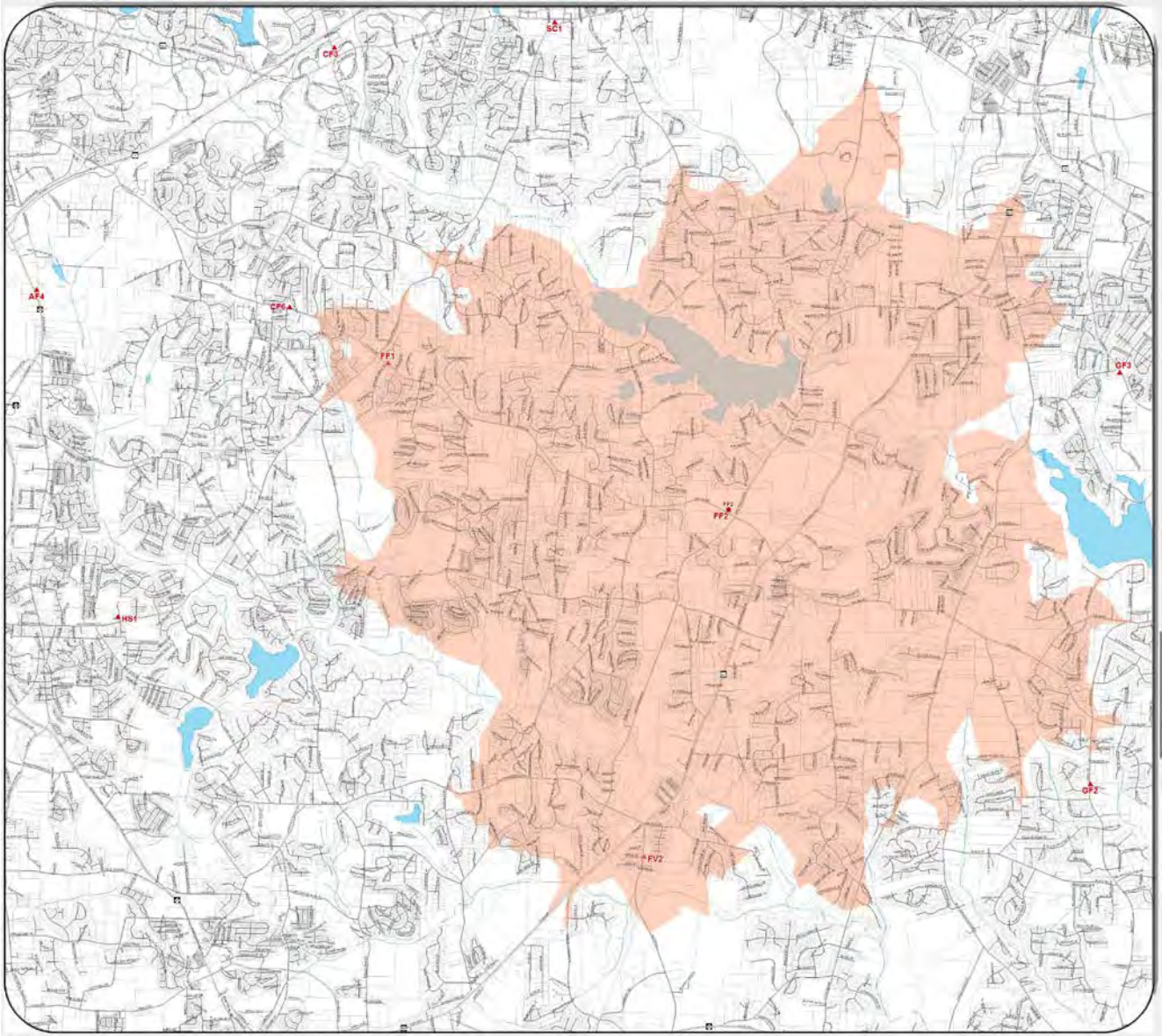
Existing Ten-Ten Fire Insurance District



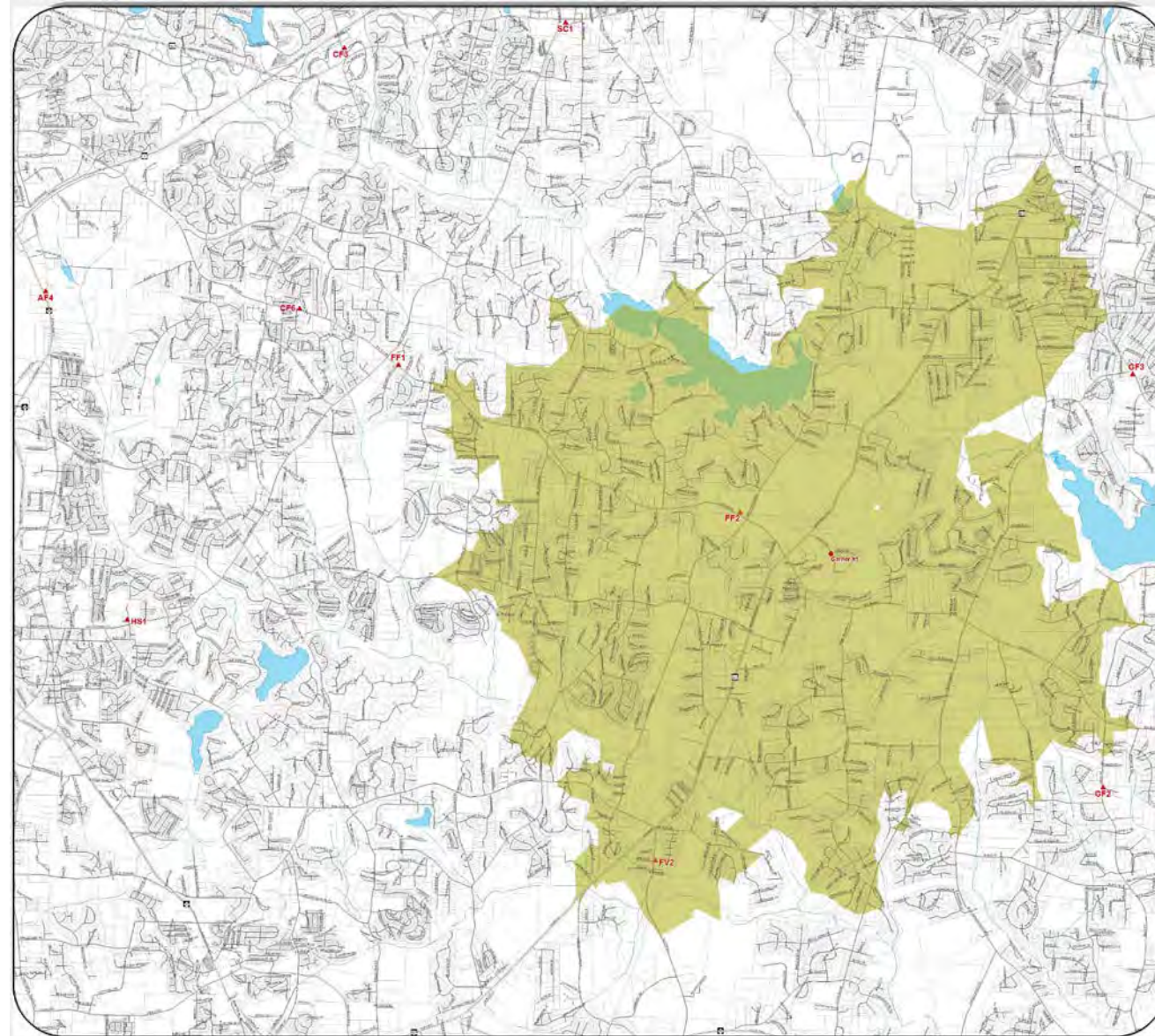
Fairview Station 1 current 5 mile area



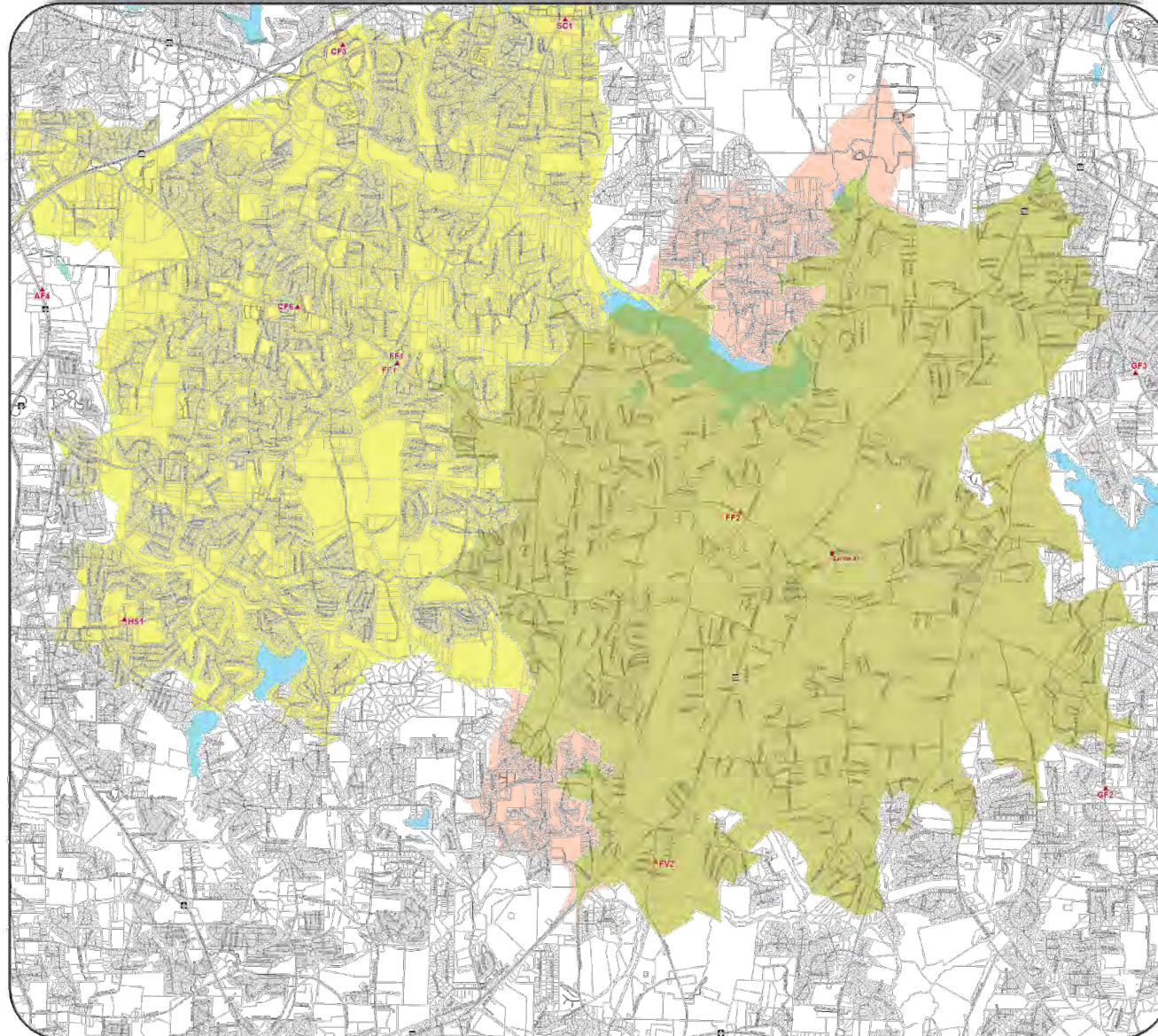
Fairview Station 2 current 5 mile area



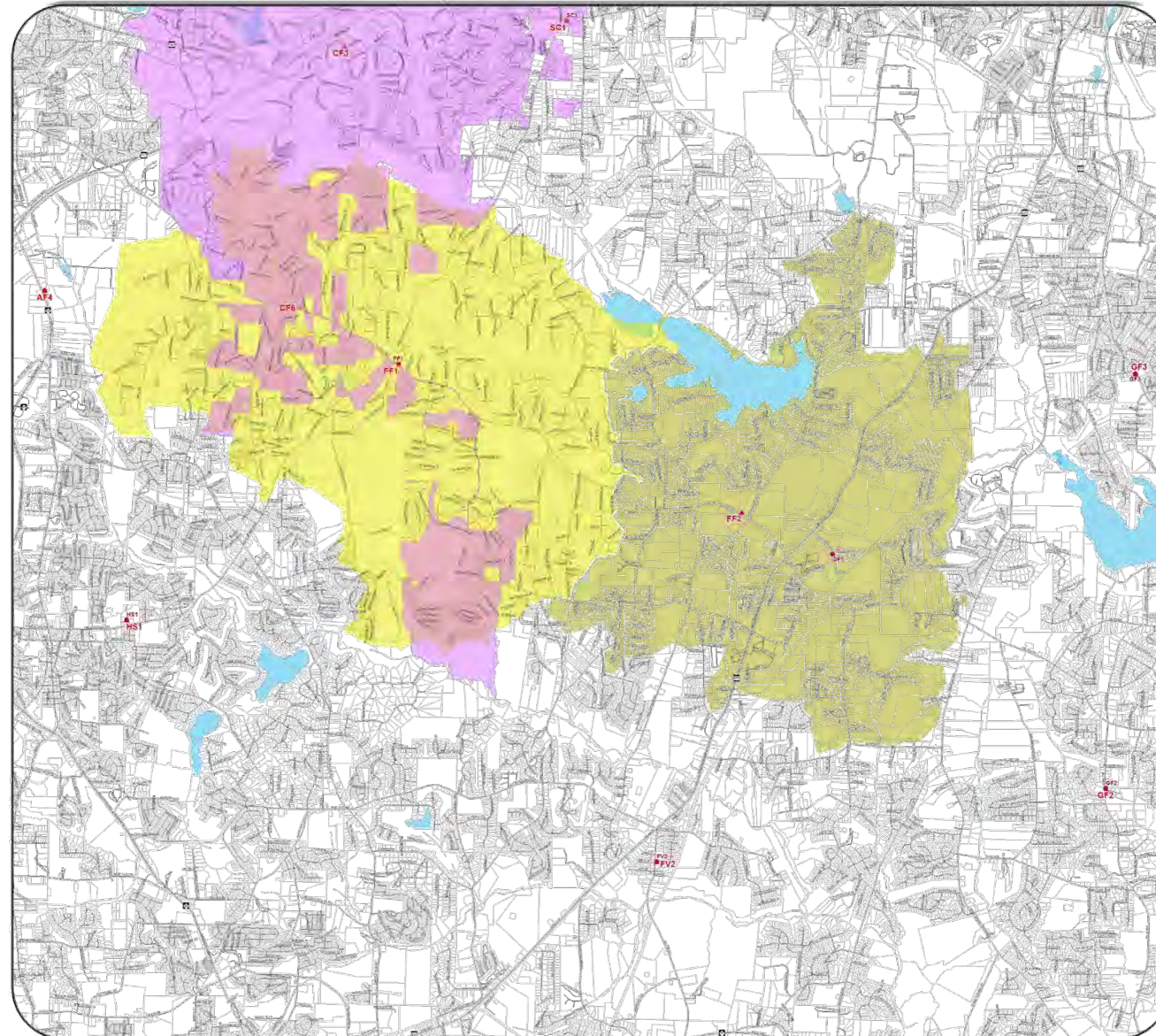
Proposed Garner station 5 mile area



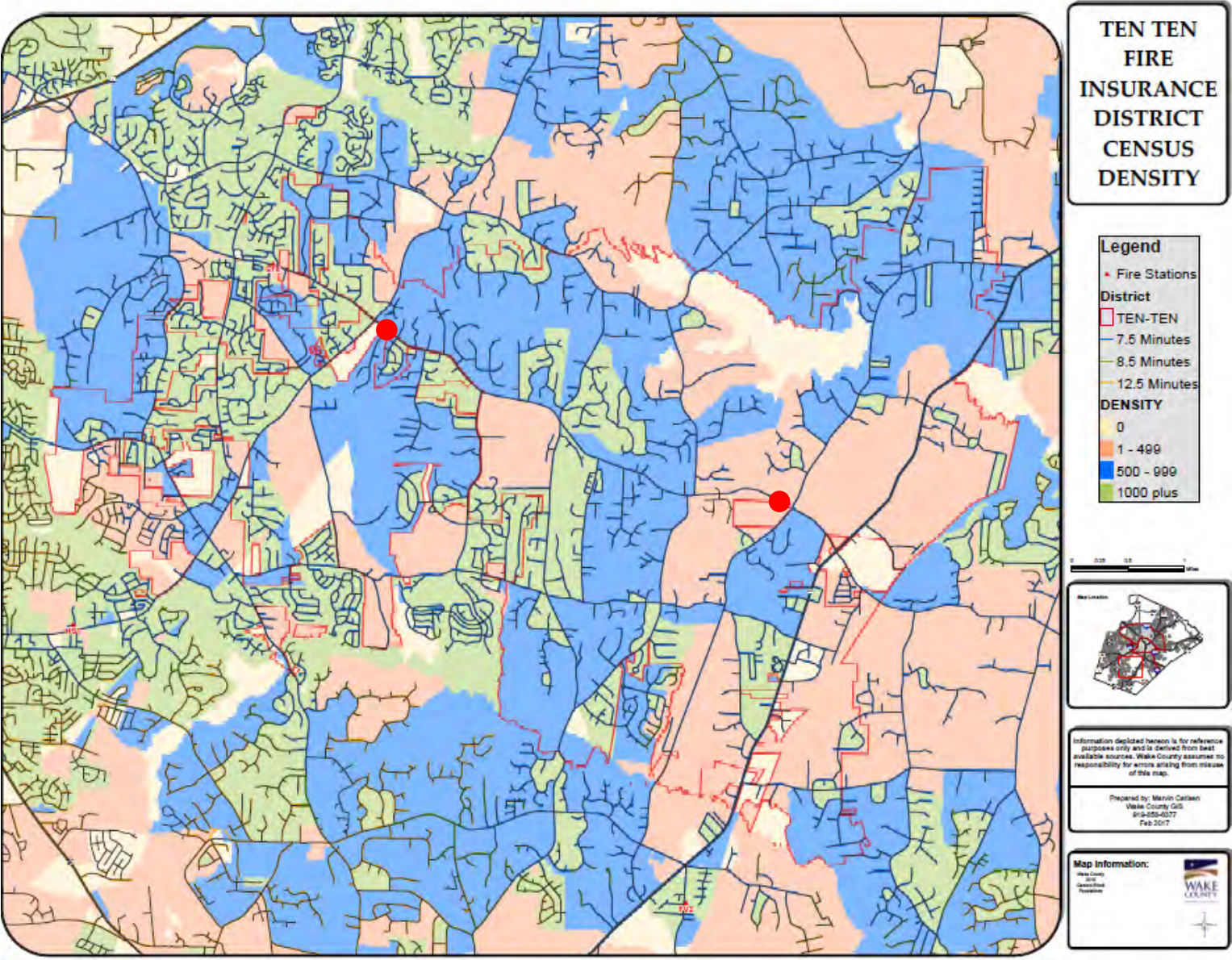
All stations 5 mile overlap



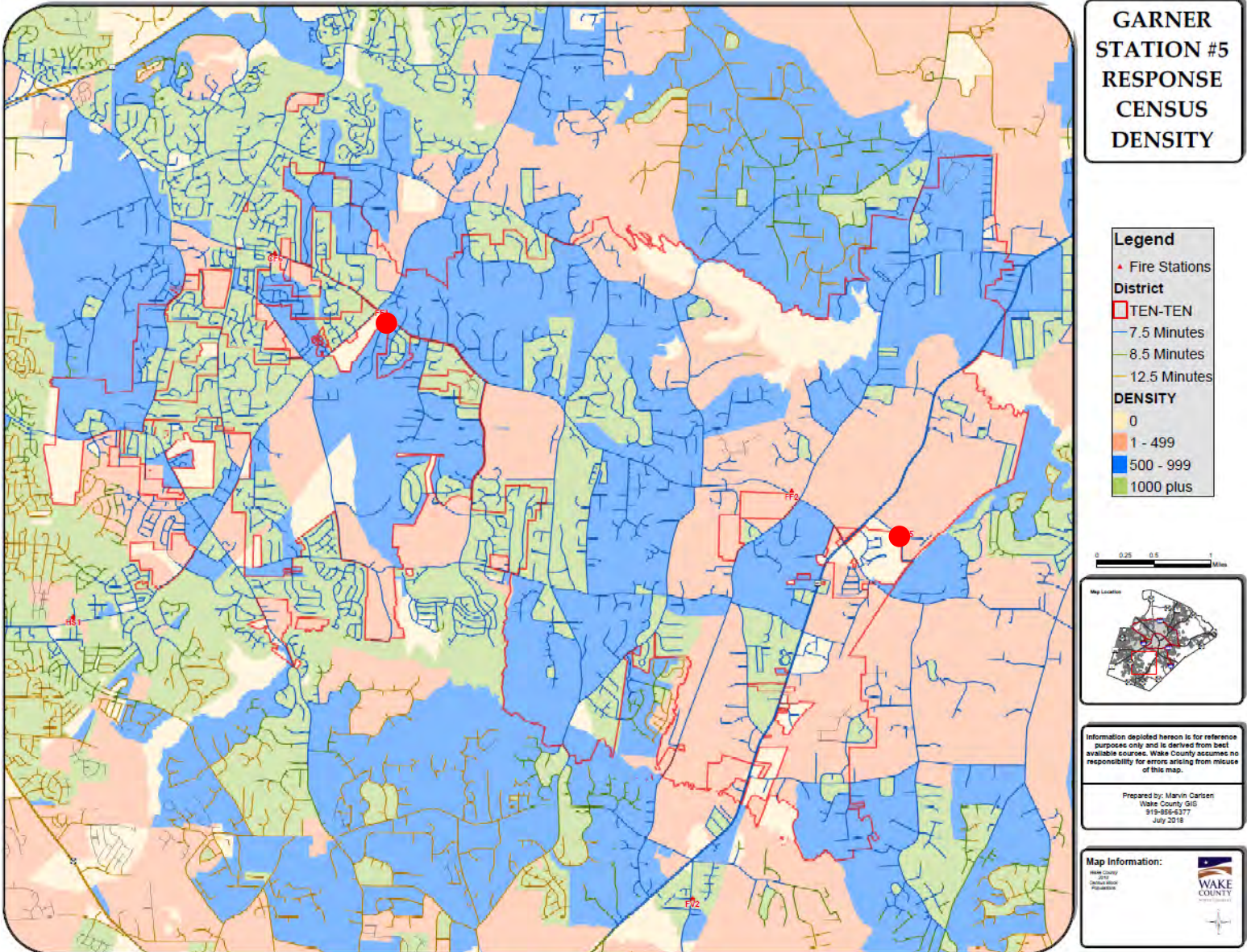
Proposed Ten-Ten / Garner Suburban Insurance Realignment



NFPA 1720 Response Times



NFPA 1720 Response Times



District Changes and Budget Implications

Garner Suburban Fire Insurance District – ISO 2/4

63.7 Square Miles

Total valuation - \$2,758,919,266*

29,310 residents

2,020 calls for service

Ten-Ten Fire Insurance District – ISO 3

24.2 Square Miles

Total valuation - \$2,120,024,742*

17,139 residents

1,647 calls for service

* Includes "Exempt" properties

Fire Insurance District Changes

Garner Suburban Fire Insurance District

Increase of 9.67 square miles to 73.37 square miles

Increase of 4,499 residents to 33,809 residents

Increase in 764 calls for service to 2784 calls for service

Increase in approximately 705 cost share “creditable” calls for service to 2725 calls for service

Ten-Ten Fire Insurance District

Decrease of 9.67 Square Miles to 14.53 square miles

Decrease of 4,499 residents to 12,640 residents

Decrease of approximately 746 calls for service to 935 calls for service

Operating Budget Implications

Garner FD Budget Operating Cost Projections

Salaries and Benefits - \$521,688

Station annual operating costs - \$58,928*

Total annual operating budget cost - \$ 580,616

Ten-Ten Fire Insurance District Station 2 Costs

Salaries, Duty Crews and Benefits - \$514,867

Station annual operating costs – \$52,477*

Total annual operating budget cost- \$567,344

* Includes Fairview vehicle maintenance, removes costs in Garner current budget and removes EMS share of Maintenance cost

Operating Budget Implications

Garner FD Budget Operating Cost Projections

New cost share % - 49.52% from 48.04% = **\$68,124** increase over existing FY19 Budget

Total new annual operating budget cost - \$ 580,616 @ 49.52% = **\$287,522**

Net = **\$355,645** increase in cost to Fire Tax District operating budget

Ten-Ten Fire Insurance District Station 2 Costs

Current FY2019 annual operating budget @ 100% = \$1,651,339

Annual operating budget after Station 2 closure = \$1,138,995

Net = **\$512,344** decrease in cost to Fire Tax District operating budget

Net annual savings to Fire Tax District operating budget = **\$156,699***

District Change Issues

ISO Ratings

Garner Suburban ISO rating of 4

Ten-Ten ISO rating of 3

Effect of Changes on Volunteers

ISO Rating Changes

- Total parcels to move into Garner Suburban – 3,036
- Residential, Vacant, Forestry, etc. – 2,854
- HOA, Cemetery, Exempt – 153 (10 Churches)
- Commercial/Industrial – 29
- Parcels not impacted by ISO change from 3 to 4 – 2,997
- 39 parcels possible premium increase of ~ 1.6% of premium

Example: Annual premium of \$2,500 = increase of ~\$40 per year

Effects on Volunteerism

- Fairview Rural FD volunteers – 23 (NCSFA 2/14/18 roster)
- Roster size similar to other single-station departments with lower calls volumes
- Recruitment and retention root causes
- Leadership's ability to “manage change” is key to retaining volunteers during change

Insurance District Realignment and Station Closure

- Questions?

End of Part 1

This slide was included in the fire commission meeting agenda packet, but not presented during the meeting.

Participation in Station Location and Construction

Background Information

This slide was included in the fire commission meeting agenda packet, but not presented during the meeting.

Site Selection

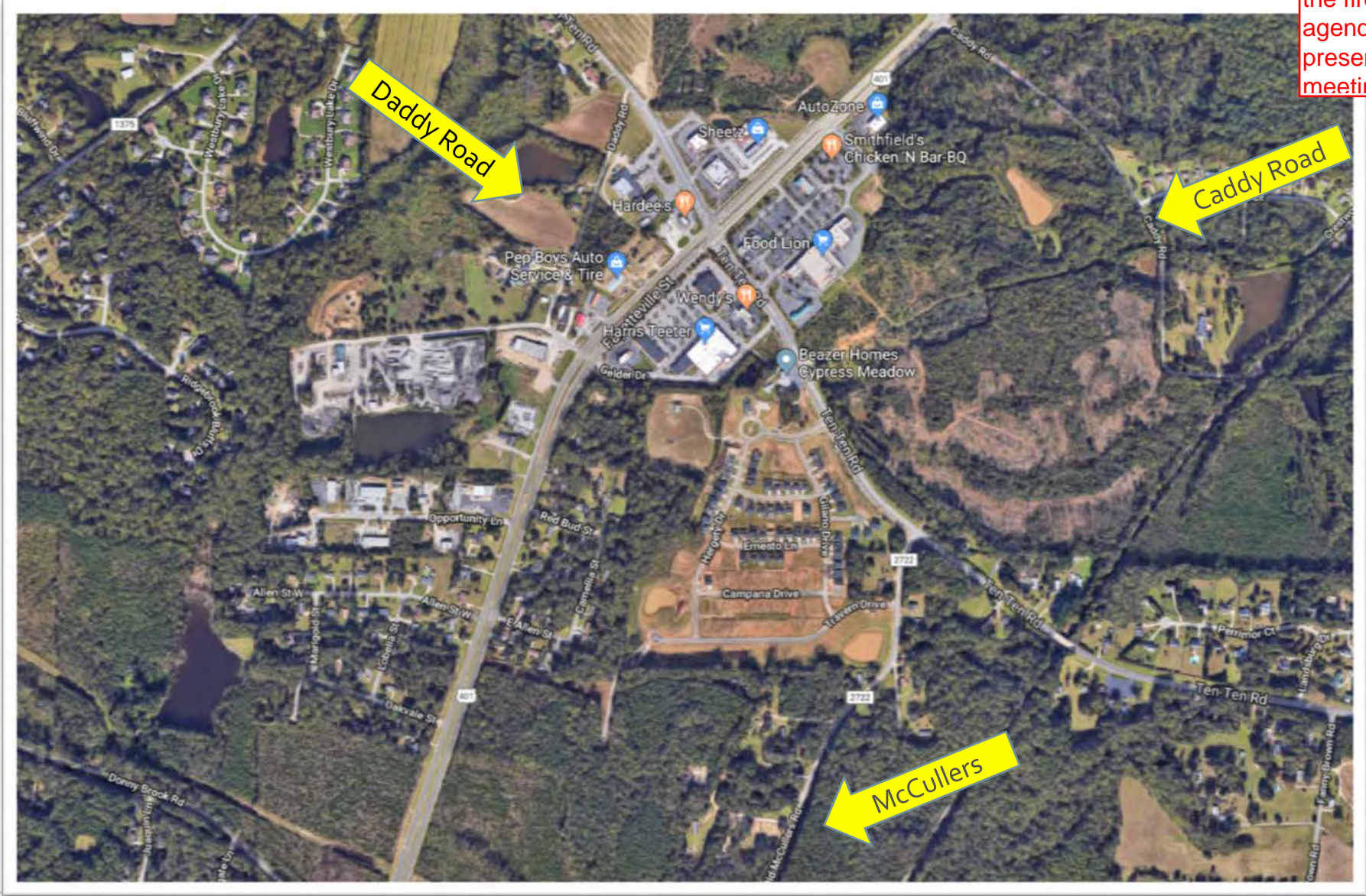
Three locations were identified and studied:

1. McCullers Road
2. Daddy Road
3. Caddy Road

“Ideal” site location – Caddy Road

Site Locations

This slide was included in the fire commission meeting agenda packet, but not presented during the meeting.



Capital Budget

This slide was included in the fire commission meeting agenda packet, but not presented during the meeting.

Station Participation Considerations

Established Cost Share methodology applies to operating budget and small capital items

Station construction participation is considered on a case-by-case basis

Wake County EMS will participate at ~ 25%

Town of Garner and County will negotiate an equitable cost share

Station Location and Participation

This slide was included in the fire commission meeting agenda packet, but not presented during the meeting.

- Questions?